

# 1000A 3-Phase Power & Harmonics Analyzer

✓ For power measurements and analysis  
Of single and 3-phase/3-wire or 3-phase/4-wire systems

## Features:

- Large backlighting LCD displays up to 35 parameters in one screen (3P4W)
- Clamp-on True RMS power measurements with on-screen Harmonics display (1-99th order)
- Simultaneous display of Harmonics and Waveform
- Display of Waveform with Peak Values (1024 samples/period)
- Analysis of Total Harmonic Distortion (THD-F)
- Displays Active Power (kW), Apparent Power (kVA), Reactive Power (kVAR) and Power Factor
- kWh and kVARh energy measurements
- Maximum Demand (MDkW, MW, kVA, MVA) with programmable period
- Adjustable CT ratio (1 to 600) and VT ratio (1 to 3000)
- Graphic Phase diagram with 3-Phase system parameters
- 3-phase VOLTAGE or Current Unbalanced Ratio (VUR, VIR) and Unbalanced Factor (d0%, d2%)
- Calculated Unbalanced Current through Neutral Line (In)
- Datalogger records up to 52428 records in single phase, (17476 records in 3-phase)
- Capture 28 Transient events (including Dip, Swell and Outage) with programmable threshold (%)
- Optically isolated RS-232 interface with software to download Waveforms, Power Parameters and Harmonics
- Complete with (3) 1000A current clamps, 4 voltage leads with alligator clips, 8 AA batteries, AC adaptor, software, PC interface cable, and carrying case.



Complete with (3) 1000A current clamps, 4 voltage leads with alligator clips, 8 AA batteries, AC adaptor, software, PC interface cable, and carrying case

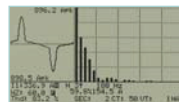


Optional 3000A Flexible Current Clamp Probes 24" (610mm) long for wrapping around busbars (Model 382098)

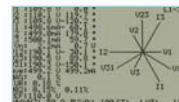


Optional 100A Current Clamp Probes (Model 382097) with 1.2" (30mm) jaw size

| Specifications                | Range  | Basic Accuracy |
|-------------------------------|--|----------------|
| ACV (True rms)                | 600V   | ±(0.5%rdg+5d)  |
| ACA                           | 1000A  | ±(0.5%rdg+5d)  |
| Active Power (kW)             | 9.999MW  | ±(1%rdg+8d)    |
| Apparent Power (kVA)          | 9999kVA  | VA=Vrms x Arms |
| Reactive Power (kVAR)         | 9999kVAR   | VAR= sqrt(WA)  |
| Power Factor                  | 0.0 to +1.00   | ±(1.5%rdg±8d)  |
| Frequency                     | 45-65Hz  | 0.1Hz          |
| Phase                         | -180.0° ~ 0° ~ +180.0°                               | ±1°            |
| Harmonics                     | 1 to 99  | ±2%            |
| Crest Factor                  | 1.00 to 99.99  | ±(5%+30d)      |
| Peak AC Voltage accuracy      |  | ±(5%rdg+30d)   |
| Peak AC Current accuracy      |  | ±(5%rdg+30d)   |
| Active Power Energy (kWh)     | 0mWh to 999,999kWh                                   |                |
| Reactive Power Energy (kVARh) | 0.0kVARh to 1000MWh                                  |                |
| Datalogging                   | 52428 records (single phase)/17476 records (3 phase) |                |
| Dimensions                    | 10.1 x 6.1 x 2.3" (257 x 155 x 57mm)                 |                |
| Weight                        | Meter: 2.5 lbs (1160g); Clamps: 1.3 lbs (600g)       |                |



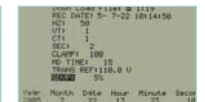
Harmonics Analysis



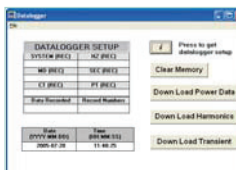
Phase Analysis



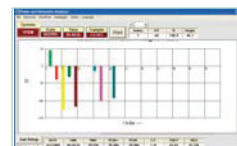
Power Analysis



Internal Menu



Software included to download, store data and display on a PC



Software Harmonics Phase Analysis



Software Harmonics Analysis

## Ordering Information:

- 382095 .....1000A 3-Phase Power Harmonics Analyzer (110V)  
 382096 .....1000A 3-Phase Power Harmonics Analyzer (220V)  
 Accessories  
 382000 .....Voltage Test Leads with Alligator Clips (4 leads)  
 382097 .....100A Current Clamp Probes (Set of 3)  
 382098 .....3000A, Flexible Current Probes (Set of 3)  
 USB100.....RS-232 to USB Adaptor



**airconcern**

more info for Extech 382098

Phone: 01235 838 555

Email: cs@airconcern.co.uk

Web: www.airconcern.co.uk

Air Concern Ltd, Building 173 Curie Avenue Harvell Didcot, Oxfordshire