

Dual Laser InfraRed Thermometers

Dual Laser Targeting

Indicates ideal measuring distance. Choose from 12" or 30" distance model where two laser points converge to 1" target spot

Features:

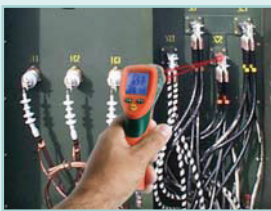
- Dual laser for accurate target
- White backlit dual LCD display
- Fast 0.15 second response time with Max display
- Adjustable emissivity increases measurement accuracy for different surface
- Adjustable High/Low set points with audible alarm alerts user when temperature exceeds the programmed set points
- Lock function for continuous readings
- Double molded housing
- Complete with pouch case and 9V battery



Dual Laser

Our Fastest and Easiest-to-use IR Thermometer

- ✓ Dual lasers identify exact measuring spot when they converge to a single spot
- ✓ 30" or 12" distance models
- ✓ Fast response is ideal for quick checks of multiple spots in a process or for catching spikes in temperature



Fast response captures hot spots



Two laser points converge at a distance of 30"/76.2cm (model 42512) or 12"/30.5cm (model 42511) and form a 1" (2.5cm) spot.



Max hold indicates and holds the peak temperature for easy identification of hot spots

Specifications	42511	42512
Laser Convergence Distance	12" (30.5cm)	30" (76.2cm)
Range	-58 to 1100°F (-50 to 600°C)	-58 to 1832°F (-50 to 1000°C)
Repeatability	±0.5% or 1.8°F/1°C	±0.5% or 1.8°F/1°C
Basic Accuracy	±(1% of rdg + 2°F/1°C)	±(1% of rdg + 2°F/1°C)
Max resolution	0.1°F/°C	0.1°F/°C
Emissivity	0.10 to 1.00 Adjustable	0.10 to 1.00 Adjustable
Field of View (Distance to Target)	12:1	30:1
Dimensions	5.7x4x1.6" (146x104x43mm)	5.7x4x1.6" (146x104x43mm)
Weight	5.7oz (163g)	5.7oz (163g)

Ordering Information:

4251112" distance Dual Laser InfraRed Thermometer
 4251230" distance Dual Laser InfraRed Thermometer
 42512-NIST....30" dist. Dual Laser InfraRed Thermometer w/ Calibration Traceable to NIST.



airconcern

more info for Extech 42512

Phone: 01235 838 555

Email: cs@airconcern.co.uk

Web: www.airconcern.co.uk

Air Concern Ltd, Building 173 Curie Avenue Harvell Didcot, Oxfordshire