

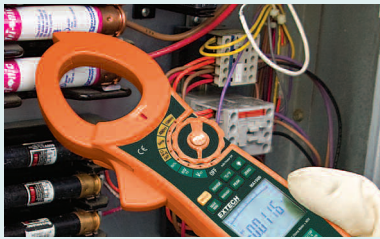
# 1500A True RMS AC/DC Clamp Meter + NCV

## Integrated Non-Contact Voltage Detector

To quickly check for the presence of live wires before testing plus True RMS and 400A and 1500A current ranges

### Features:

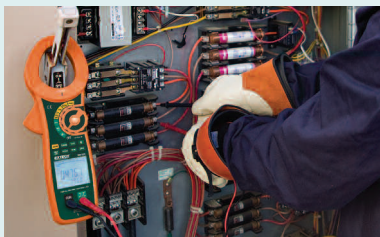
- True RMS for accurate readings of non-sinusoidal waveforms
- Built-in non-contact Voltage detector with LED alert
- 2.0" (52mm) jaw size for conductors up to 500MCM
- Dual 40,000/4000 count, backlit LCD display
- Includes Multimeter functions
- Inrush function captures transients during motor startups
- Relative Mode for Capacitance Zero and Offset Adjustment
- Data Hold, Peak Hold, MIN/MAX, and Auto Power Off
- Complete with test leads, general purpose Type K bead wire temperature probe, 9V battery and carrying case



Built-in non-contact Voltage detector with LED alert



2.0" (52mm) jaw size for conductors up to 500MCM



Test leads included for Multimeter functions

Specifications	Range	Max. Resolution	Basic Accuracy (% readings+digits)
Display counts	40,000/4,000		
AC Current (True RMS)	400.00A, 1500.0A	0.01A	±(2.8% + 30d)
DC Current	400.00A, 1500.0A	0.01A	±(2.5% + 30d)
AC Voltage (True RMS)	400.00mV, 4.000V, 40.00V, 750.0V	0.01mV	±(1.0% + 30d)
DC Voltage	400.00mV, 4.0000V, 40.000V, 1000.0V	0.01mV	±(0.1% + 4d)
Resistance	400.00Ω, 4.0000kΩ, 40.000kΩ, 400.00kΩ, 4.0000MΩ, 40.000MΩ	0.01Ω	±(0.5% + 9d)
Frequency	40Hz to 40MHz	0.001Hz	±(0.3% + 2d)
Capacitance	400.00nF, 4000nF, 40.00μF, 400.0μF, 4.000mF, 20.00mF, 40.00mF	0.01nF	±(3.5% + 10d)
Temperature	-148 to 1832°F (-100 to 1000°C)	0.1°	±(1% + 4.5°F/2.5°C)
Duty Cycle	10.0 to 95.0%	0.1%	±(1.0% + 2d)
Diode	Yes		
Continuity	Yes		
Dimensions	11.57x4.13x1.85" (294x105x47mm)		
Weight	18.9oz (536g)		

### Ordering Information:

MA1500 .....1500A True RMS AC/DC Clamp Meter + NCV

MA1500-NIST ..1500A True RMS AC/DC Clamp Meter + NCV w/ Calibration Traceable to NIST.



**airconcern**

more info for Extech MA150

Phone: 01235 838 555

Email: [cs@airconcern.co.uk](mailto:cs@airconcern.co.uk)

Web: [www.airconcern.co.uk](http://www.airconcern.co.uk)

Air Concern Ltd, Building 173 Curie Avenue Harvell Didcot, Oxfordshire