

400A AC Clamp Meter + NCV

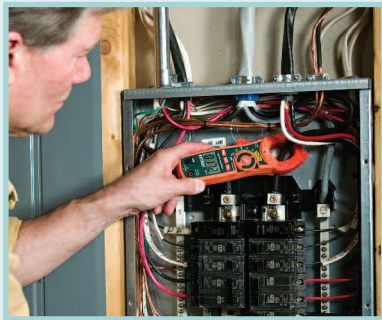
Integrated Non-Contact Voltage Detector
To quickly check for the presence of live wires before testing plus
40A and 400A current ranges

Features:

- Built-in non-contact Voltage detector with LED alert
- 4000 count, backlit LCD display
- 1.2" (30mm) jaw size for conductors up to 350MCM
- Includes Multimeter functions AC/DC Voltage, Resistance, Capacitance, Frequency, Temperature, Duty Cycle, Diode, and Continuity
- Relative Mode for Capacitance Zero, and Offset Adjustment
- Data Hold
- Auto Power Off
- Complete with test leads, temperature probe, two AAA batteries, and carrying case



Built-in non-contact Voltage detector with LED alert



Compact size allows measurements in tight locations

Specifications	Range	Max. Resolution	Basic Accuracy (% readings+digits)
Display counts	4000		
AC Current	40.00A, 400.0A	0.01A	±(2.5% + 8d)
AC Voltage	4.000V, 40.00V, 400.0V, 600V	0.001V	±(1.8% + 8d)
DC Voltage	400.0mV, 4.000V, 40.00V, 400.0V, 600V	0.1mV	±(0.8% + 2d)
Resistance	400.0Ω, 4.000kΩ, 40.00kΩ, 400.0kΩ, 4.000MΩ, 40.00MΩ	0.1Ω	±(0.8% + 2d)
Frequency	10Hz to 10kHz	0.01Hz	±(1.5% + 2d)
Capacitance	40.00nF, 400.0nF, 40.00μF, 100.0μF	0.01nF	±(3.0% + 5d)
Temperature	-4 to 1400°F (-20 to 760°C)	0.1°	±(3% + 9°F/5°C)
Duty Cycle	0.5 to 99.0%	0.1%	±(1.2% + 2d)
Diode	Yes		
Continuity	Yes		
Dimensions	7.9x2.6x1.5" (200x66x37mm)		
Weight	7.2oz (205g)		

Ordering Information

MA410400A AC Clamp Meter + NCV
MA410-NIST.....MA410 with Calibration Traceable to NIST.



airconcern

more info for Extech MA410

Phone: 01235 838 555

Email: cs@airconcern.co.uk

Web: www.airconcern.co.uk

Air Concern Ltd, Building 173 Curie Avenue Harvell Didcot, Oxfordshire