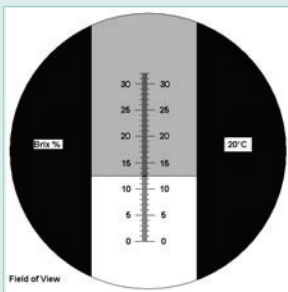


Portable Refractometers

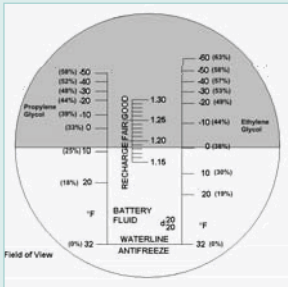
✓ Measure the concentration of Sugar, Salt, Lubricants, Antifreeze, Cutting Fluids & more
Available with or without Automatic Temperature Compensation

Features:

- Easy to operate refractometers provide accurate and repeatable measurements on easy to read scales
- Automatic temperature compensation models available for sugar, salt, lubricants, cutting fluids, and antifreeze
- Requires only 2 or 3 drops of solution
- The prism and lens with a simple focus adjustment provides repeatable results
- Complete with case, calibration screwdriver, and calibration solution



RF10, 15 - Scale view through eyepiece



RF40 - Scale view through eyepiece

Ordering Information:

- RF160 to 10% Brix Refractometer
- RF110 to 10% Brix Refractometer with ATC
- RF180 to 18% Brix Refractometer
- RF120 to 18% Brix Refractometer with ATC
- RF100 to 32% Brix Refractometer
- RF150 to 32% Brix Refractometer with ATC
- RF20Salinity Refractometer with ATC
- RF40Battery Coolant/Glycol Refractometer with ATC (°F)
- RF41Battery Coolant/Glycol Refractometer with ATC (°C)
- RF30Triple Range General Service Brix Refractometer

Specifications				
Model	Type	Ranges	Resolution	Accuracy
RF16	Sucrose	0 to 10% Brix	0.1	±0.1%
RF11	Sucrose (ATC)	0 to 10% (10 to 30°C)	0.1	±0.1%
RF18	Lubricant/Cutting fluid	0 to 18% Brix	0.2	±0.2%
RF12	Lubricant/Cutting fluid (ATC)	0 to 18% Brix (10 to 30°C)	0.2	±0.2%
RF10	Sucrose	0 to 32% Brix	0.2	±0.2%
RF15	Sucrose (ATC)	0 to 32% Brix (10 to 30°C)	0.2	±0.2%
RF20	Salt (ATC)	0 to 100ppt (10 to 30°C)	0.001	±0.1%
		1.000 to 1.070 Refractive Index		
RF40	Coolant (ATC)	-60 to 32°F Propylene Glycol freeze point	2°F	±2%
		-60 to 25°F Ethylene Glycol freeze point	2°F	±2%
		1.15 to 1.30 Specific Gravity of Battery Acid	0.01	
RF41	Coolant (ATC)	-50 to 0°C Propylene Glycol freeze point	1°C	±2%
		-50 to 0°C Ethylene Glycol freeze point	1°C	±2%
		1.15 to 1.30 Specific Gravity of Battery Acid	0.01	
RF30	Triple Range General Service	0 to 41% Brix	0.2	±0.2%
		42 to 71% Brix	0.2	±0.2%
		72 to 90% Brix	0.2	±0.2%
Dimension/Wt		RF10/RF15: 6.6 x 1.6 x 1.2" (170 x 40 x 30mm)/ 7oz (200g); RF11/RF16: 7.5 x 1.6 x 1.2" (190 x 40 x 30mm)/ 6.5oz (185g); RF12/RF18: 6.7 x 1.6 x 1.2" (170 x 40 x 30mm)/ 6.5oz (185g); RF20: 7.6 x 1.5 x 1.5" (194 x 38 x 38mm)/ 8oz (227g); RF40/RF41: 6.2 x 1.6 x 1.2" (160 x 40 x 30mm)/ 6.3oz (180g) RF30: 7.9 x 1.5 x 1.1" (200 x 38 x 28mm)/ 21.86oz (620g)		



airconcern

more info for Extech RF18

Phone: 01235 838 555

Email: cs@airconcern.co.uk

Web: www.airconcern.co.uk

Air Concern Ltd, Building 173 Curie Avenue Harvell Didcot, Oxfordshire