

For Your Safety

Strictly follow the Instructions for Use

Any use of the apparatus requires full understanding and strict observation of these instructions. The apparatus is only to be used for purposes specified here.

Liability for proper function or damage

The liability for the proper function of the apparatus is irrevocably transferred to the owner or operator to the extent that the apparatus is serviced or repaired by personnel not employed or authorized by DrägerService or if the apparatus is used in a manner not conforming to its intended use.

Dräger cannot be held responsible for damage caused by non-compliance with the recommendations given above. The warranty and liability provisions of the terms of sale and delivery of Dräger are likewise not modified by the recommendations given above.

Dräger Safety AG & Co. KGaA

Only when the test is carried out correctly is an accurate result given.

Field of application

Screening measurement of mite allergens in house dust.

In situ measurement of mite allergens

Allergic symptoms are caused by contact with allergy-producing substances, known as allergens. Depending on the extent of contact with the allergen, people who are not normally allergic to the substance in question may develop an allergy (sensitisation), while allergic symptoms may be triggered in those already allergic to the substance. Whether a person was exposed to an allergen in early childhood has a major bearing on the development of the illness

in later life. With early detection and prevention by avoidance strategies, a whole series of symptoms can be prevented, e.g. allergic colds, streaming eyes or asthma.

Since people in industrial countries spend over 90% of their time indoors, indoor allergies are, in this context, particularly significant. Allergies from house dust mites are regarded as the most common of indoor allergies. In this case considerable contact with allergens occurs not only in the home but also in public areas, such as schools, nursery schools or conference rooms and in the workplace. House dust mites feed on cutaneous scales and prefer damp, warm environments (e.g. mattresses).

To assess the risk of contact with an allergen, the concentration of mite allergens in house dust can be measured with Allergen Control.

The application of Allergen Control is limited to the following textile surfaces:

- **Mattresses** (especially the head area) – remove sheets beforehand.
- **Carpets.**
- **Upholstered furniture** (not on leather).

It is recommended that several objects in the child's bedroom or sleeping area be tested.

Pack contents

- Allergen Control (in aluminium pouch)
- Instructions for use
- Dropper containing solution

Measuring

Measuring with Allergen Control takes place in two steps:

- Collecting of house dust by wiping textile surfaces with Allergen Control.
- Analysing of house dust by applying droplets of the solution.

Conditions of application

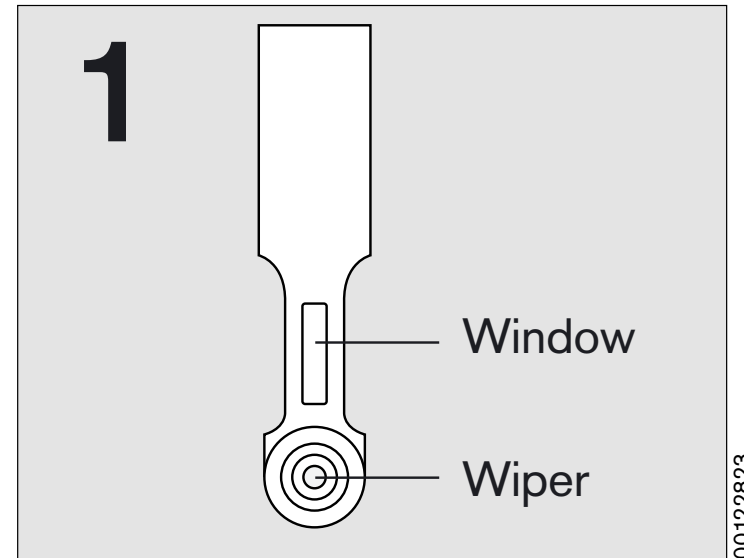
Temperature: 15 to 35° C.

Do not expose to direct sunlight before and during use.

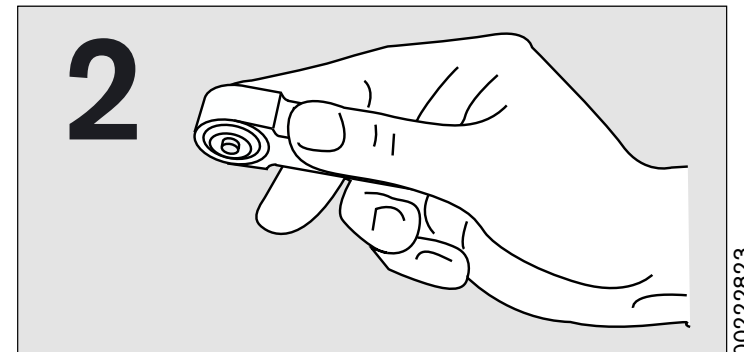
The test must be carried out within 60 minutes of opening the aluminium pouch.

Carrying out measurement

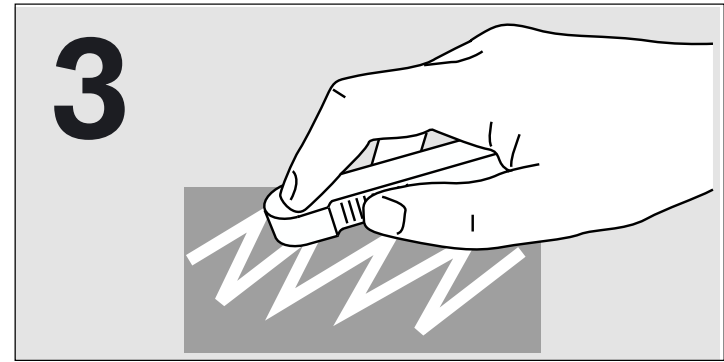
- 1** Tear open aluminium pouch and remove Allergen Control.



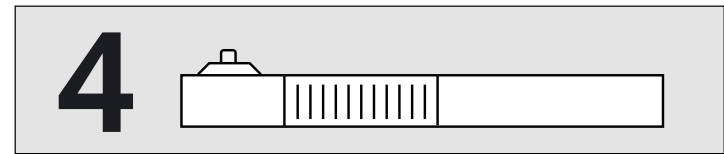
- 2** Hold Allergen Control in such a way that the forefinger is positioned in the finger groove on the reverse side of the casing. Wiper facing down.



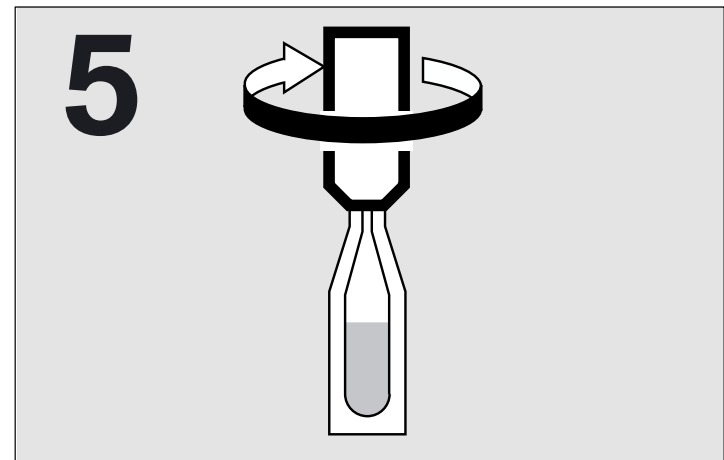
3 Wipe an area the size of a standard letter (A4) in quick zigzag movements for exactly 60 seconds (use a watch). At the same time lightly press Allergen Control with your forefinger.



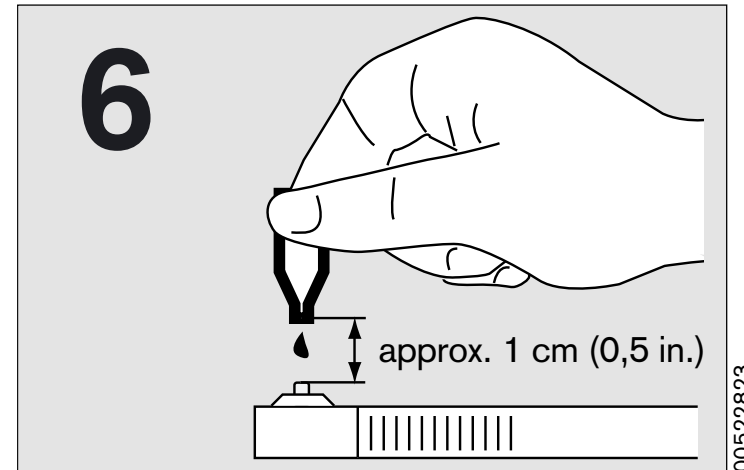
4 Place Allergen Control – wiper upwards – on an even surface (e.g. table).



5 Open the dropper carefully by twisting off the tab.

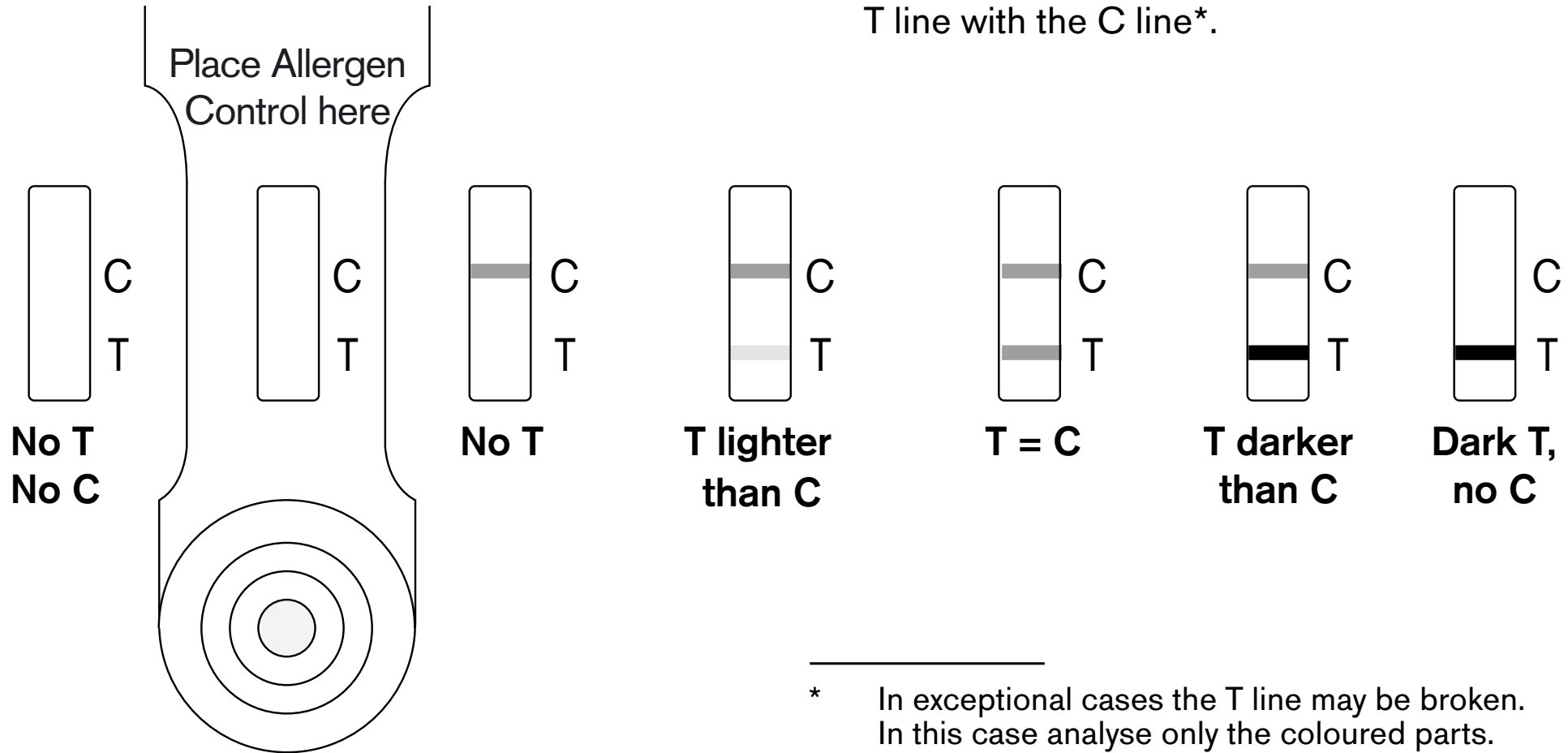


- 6** Hold the dropper over the wiper.
Press lightly and let **5 individual droplets** of the solution fall directly on to the wiper one after the other. Ensure distance of approx. 1 cm as shown.
- Keep Allergen Control flat to allow analysis.
 - After **10 minutes** (use a watch) carry out analysis.



Analysis

- Place Allergen Control in the position shown.
- Match the red lines T and C to one of the strips ("windows") shown. If two lines are visible, compare the colour intensity of the T line with the C line*.



* In exceptional cases the T line may be broken. In this case analyse only the coloured parts.

Recommendations for allergen concentrations

Result	Allergen Concentration	Recommendation/Action (see also following page)
No T No C	Invalid test	Repeat test
No T	No allergen is detected	No action necessary
T lighter than C	Slight amount of allergen; in all probability the sensitisation value is not exceeded.	No action necessary
T = C	High amount of allergen; the sensitisation value is perhaps already exceeded.	Action recommended for high risk groups
T darker than C	Very high amount of allergen; the asthma risk value is exceeded.	Action necessary for high risk groups
Dark T No C	Very high amount of allergen; the asthma risk value is exceeded	Action necessary for high risk groups

Sensitisation value: 2 micrograms of mite allergens per gram of house dust.

Asthma risk value: 10 micrograms of mite allergens per gram of house dust.

High risk groups are:

People with a known oversensitivity to mite allergens. Children with a genetic predisposition, i. e. one or two parents are oversensitive to mite allergens.

Preventative action

People with allergies should not be involved in any activities which can stir up dust (e.g. vacuum cleaners).

Generally speaking, the best way to protect this risk group is to avoid contact with the allergen in the first place. This can be done by taking the following precautions:

- Ensure the environment is as dust-free as possible; dispose of dusters
- Improve air quality:
- Lower humidity in living and sleeping areas to under 50%; eliminate any damage from damp; air regularly for a short time.
- Use textiles and bed linen which can be washed at above 60 °C. Change bed linen frequently.
- Provide mattresses and bed linen with mite and allergy proof covers (specialist suppliers).
- Mite killing and allergen binding cleaners can also be used as a preventative measure (specialist shops).
- In case of high allergen exposure, consultation with an allergist, dermatologist, environmental doctor or general practitioner is recommended.

It is advisable to check regularly the degree of exposure to mite allergens, particularly after carrying out preventative measures.

found on the packaging.

Quote the serial number when making enquiries.

Additional information

Keep Allergen Control out of reach of children – it is not a toy.

Ensure that the solution in the dropper does not come into contact with mucous membranes (e.g. nose, eyes, mouth) – this is not medication.

Allergen Control does not contain any toxic materials. Used or non-reusable Allergen Control can be disposed of with household rubbish.

The use-by date and the serial number are to be